

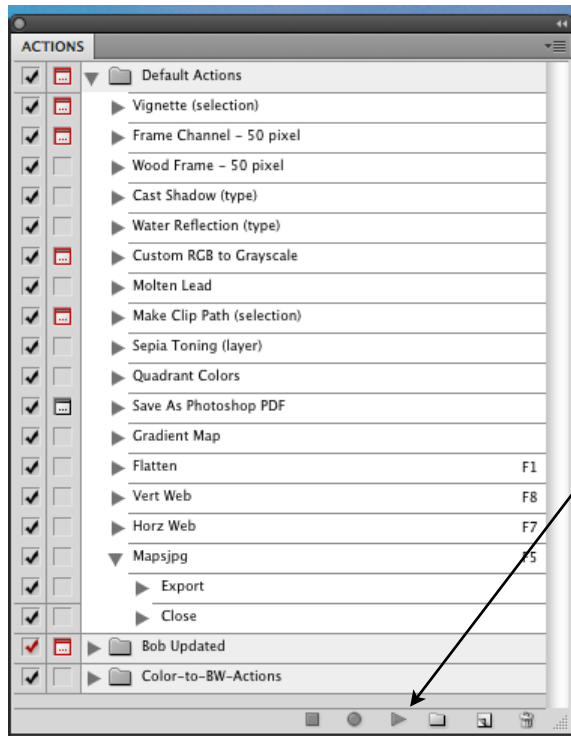
# SCENIC LIGHT

## Procedures for load and running actions in Photoshop

by Bob Evans

There are many ways to edit and adjust image files in Photoshop. However the most time saving and accurate way is to either record or import an action set. That is to say, an action is a prerecord set of instructions that Photoshop will perform upon command. The paper below is a step by step method for using these actions, to save time and also keep your workflow consistent.

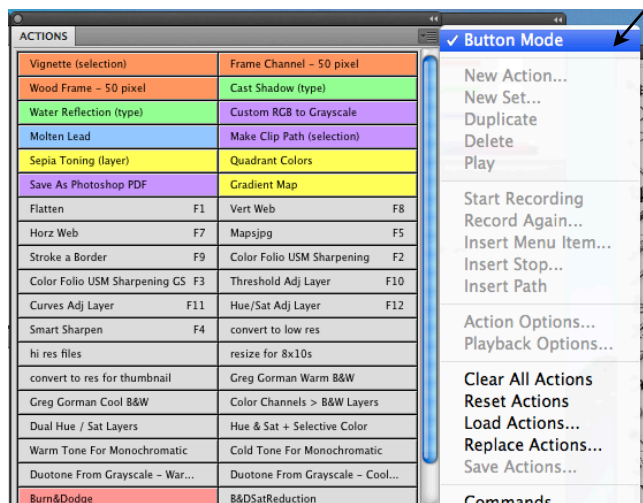
Complete instructions for use are included in all of our field workshops.

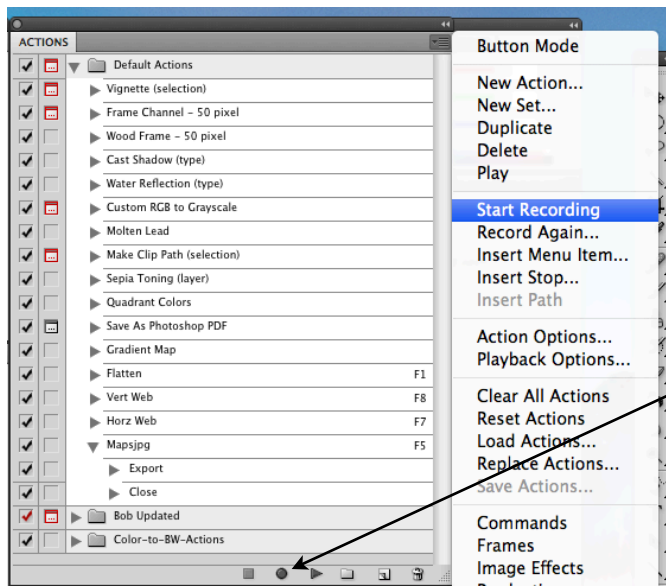


The first step is to run an action set.

This is the actions palette in CS4 opened and showing the default actions that come with Photoshop. To run any actions highlight the actions required and lick on the run button.

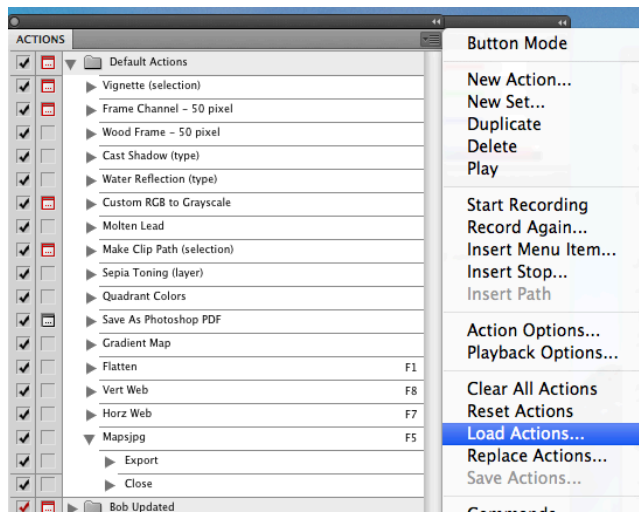
You may also click on the button mode in the crop down window and simply click on the actions. It will begin running.





The next step is to record your own action. In this window you select the record action and click record button. Once you do then each and every step or click will be recorded until you hit the stop button. You can also set an F key and assign it to any recorded set.

The action can be as simple as to flatten or as complicated as you can devise.



Next is to load as action. Once you click here a screen will appear showing you your computer files and devices. Click on any .atn file and it will be loaded into it's own folder in the actions palette.

Then click run as in the first instruction.

Recording and loading actions will save you much time an effort and also keep you in a non-destructive workflow.